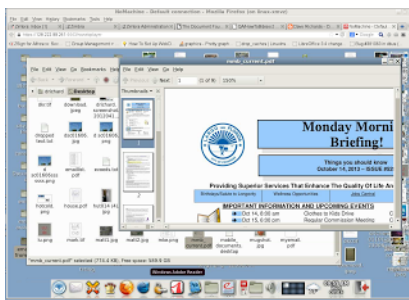


# And Several Months Later....

By *Roy Schestowitz*

Created *15/08/2014 - 1:42am*

Submitted by Roy Schestowitz on Friday 15th of August 2014 01:42:29 AM Filed under [GNU](#) [1] [LibO](#) [2] [Linux](#) [3] [GNOME](#) [4]



We are moving our production GNOME desktop to new physical hardware. After some discussions and reviewing work loads, we decided for now to stay with GNOME 2. The older server was cloned and was finally moved to the new hardware. The server is 100% solid state drives with 80 hyperthreaded cores. This increased capacity was needed for the next project:

[5]

[GNU](#) [LibO](#) [Linux](#) [GNOME](#)

---

Source URL: <http://www.tuxmachines.org/node/68233>

Links:

- [1] <http://www.tuxmachines.org/taxonomy/term/144>
- [2] <http://www.tuxmachines.org/taxonomy/term/138>
- [3] <http://www.tuxmachines.org/taxonomy/term/63>
- [4] <http://www.tuxmachines.org/taxonomy/term/146>
- [5] <http://davelargo.blogspot.co.uk/2014/08/and-several-months-later.html>