

# Hitch your wagon to a lizard: dist-upgrading openSUSE

By *eco2geek*

Created 15/11/2009 - 5:30pm

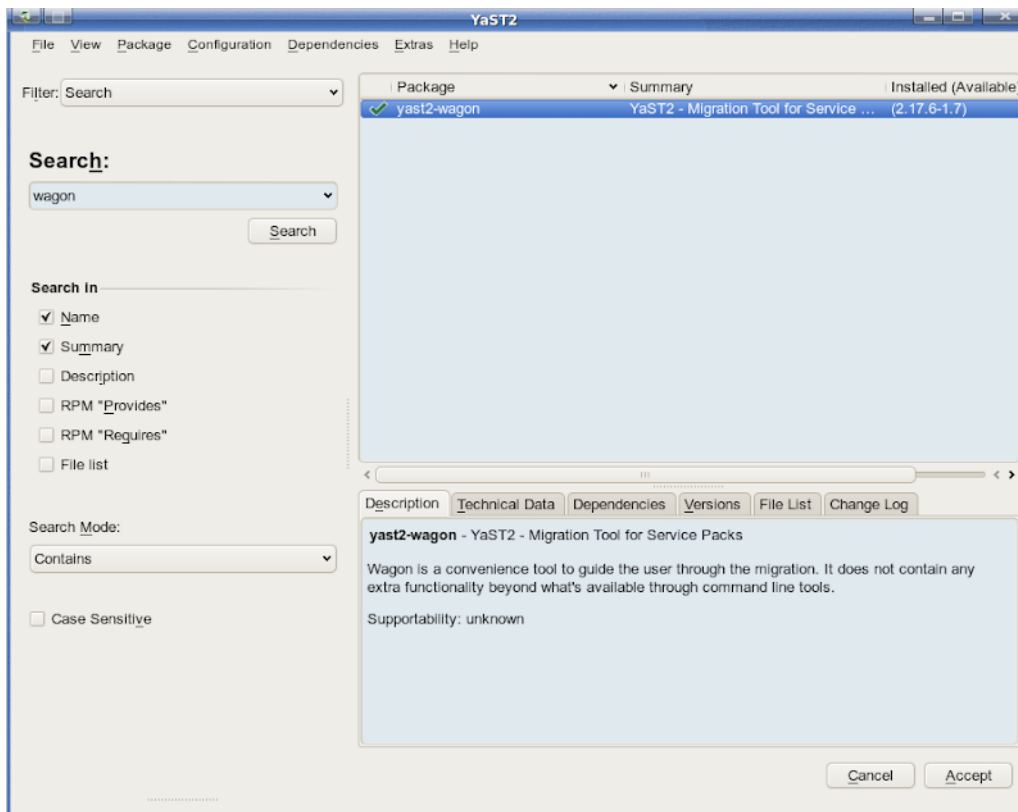
Submitted by eco2geek on Sunday 15th of November 2009 05:30:17 PM Filed under [Linux](#) [1]

For the first time, openSUSE now [officially supports](#) [2] a "[dist-upgrade](#) [3]" feature, similar to Debian's. Which is to say, if you've got openSUSE 11.1 installed, you should be able to upgrade to openSUSE 11.2 by updating your list of [software repositories](#) [4] to point to providers of software for openSUSE 11.2, doing a distribution upgrade via the Internet, and have a reasonable chance of success.

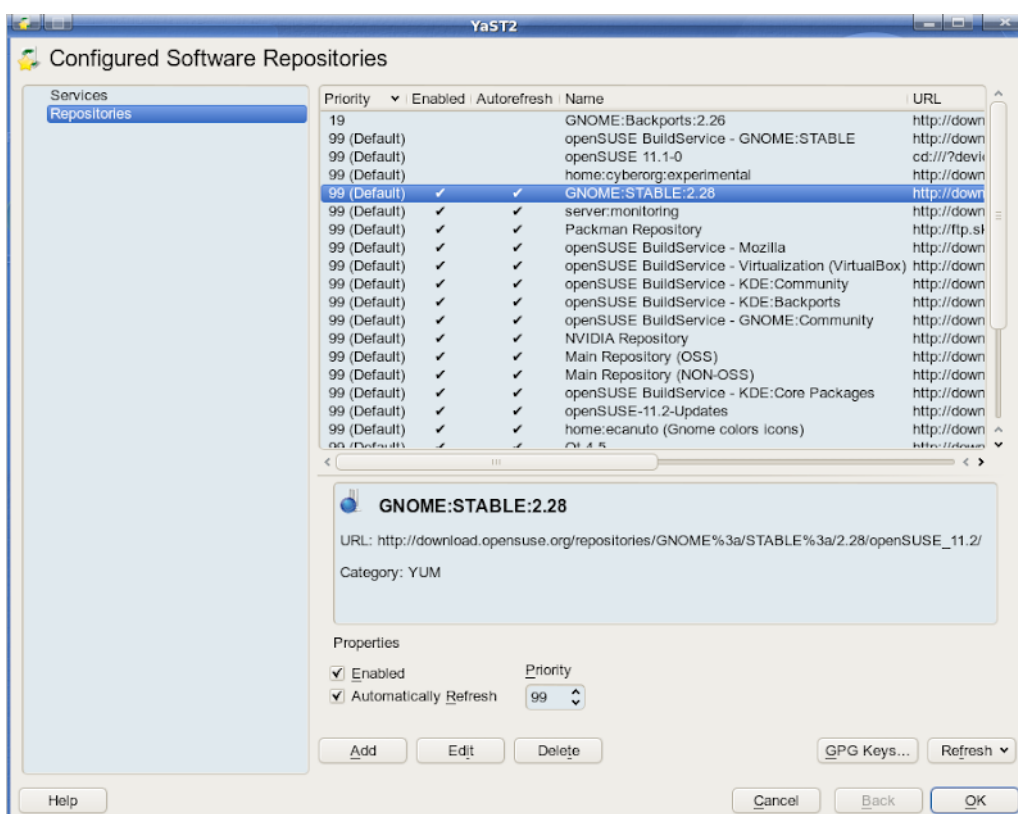
The [stated reasoning](#) [5] behind the addition of this feature seems to focus on competition with Ubuntu. Fine then; although the openSUSE installation media's offered the option of updating rather than installing for a while now, it was always a hit and miss affair; usually more miss than hit, so that doing a clean install was often necessary. (One obvious reason is that the installation media only provides a few software repositories; if you had a whole bunch of online repositories active prior to installation, you probably had software installed that wasn't even **on** the installation media. Novell also seems to be admitting that its software management tools weren't up to the task until now.)

The easiest way to upgrade from openSUSE 11.1 to 11.2 is via the command line. However, that doesn't make for very exciting screenshots, so I elected to install a [YaST](#) [6] module named "[wagon](#) [7]" that does the same thing. It failed about halfway through the process, and I had to go back to the command line. If you use "wagon," I hope your results are better than mine! Here's the play-by-play.

(Two things of note: They say that the more repositories you have enabled, the greater the chance that a distribution upgrade won't work. And my screenshots of KDE and GNOME won't look like what you see if you install openSUSE out-of-the-box, since I've re-decorated.)



Step 1: Install "wagon" via YaST.



Step 2: Disable and/or update existing software repositories to their openSUSE 11.2 equivalents.

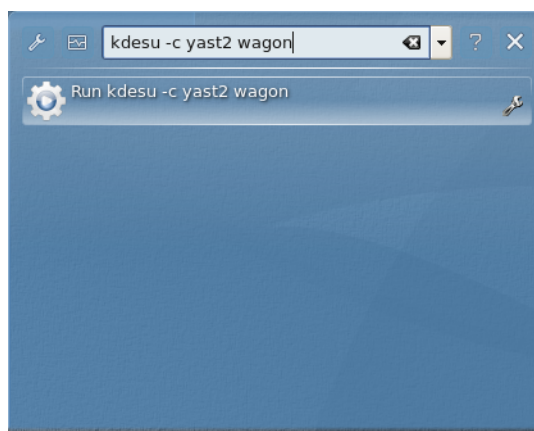
(This was tedious but mostly meant changing a "1" to a "2" in the repo's URL.)

#### Existing repository

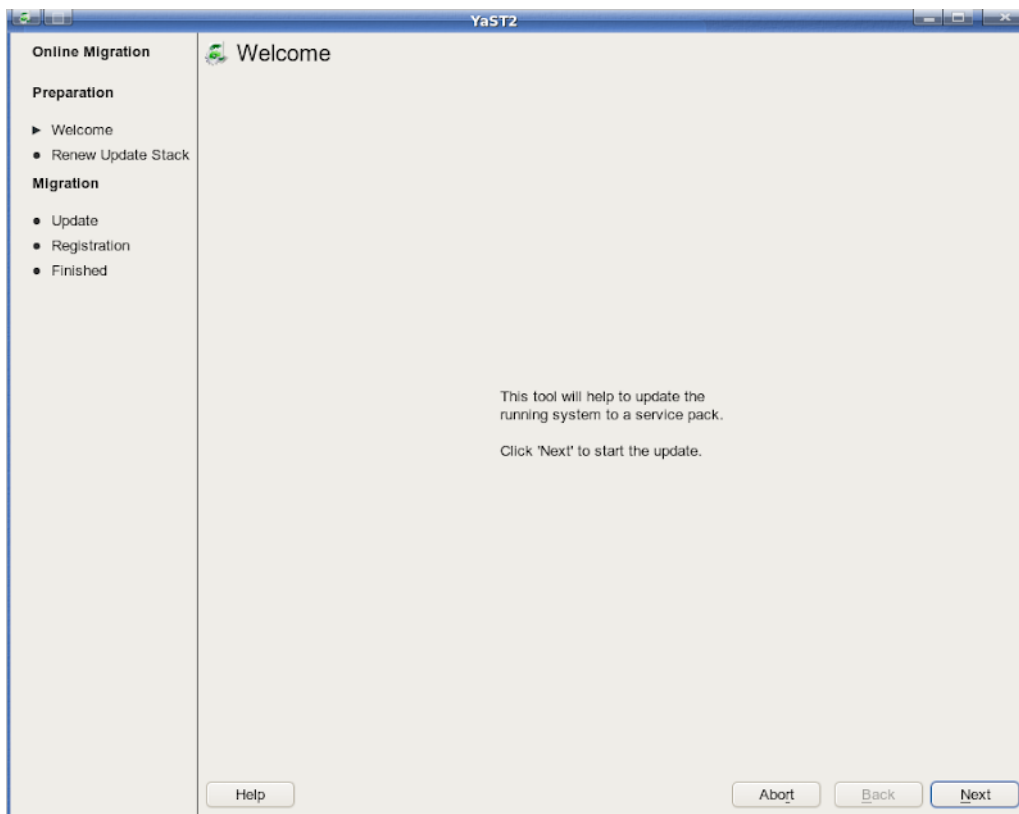
#### New repository

Gnome:Backports:2.6 (openSUSE v11.1)	No v11.2 equivalent. Disable.
Gnome:Stable:2.6 (openSUSE v11.1)	<a href="#">Gnome:Stable:2.8 (openSUSE v11.2)</a> [8]
server:monitoring - v11.1	<a href="#">v11.2</a> [9]
Packman - v11.1	<a href="#">v11.2</a> [10]

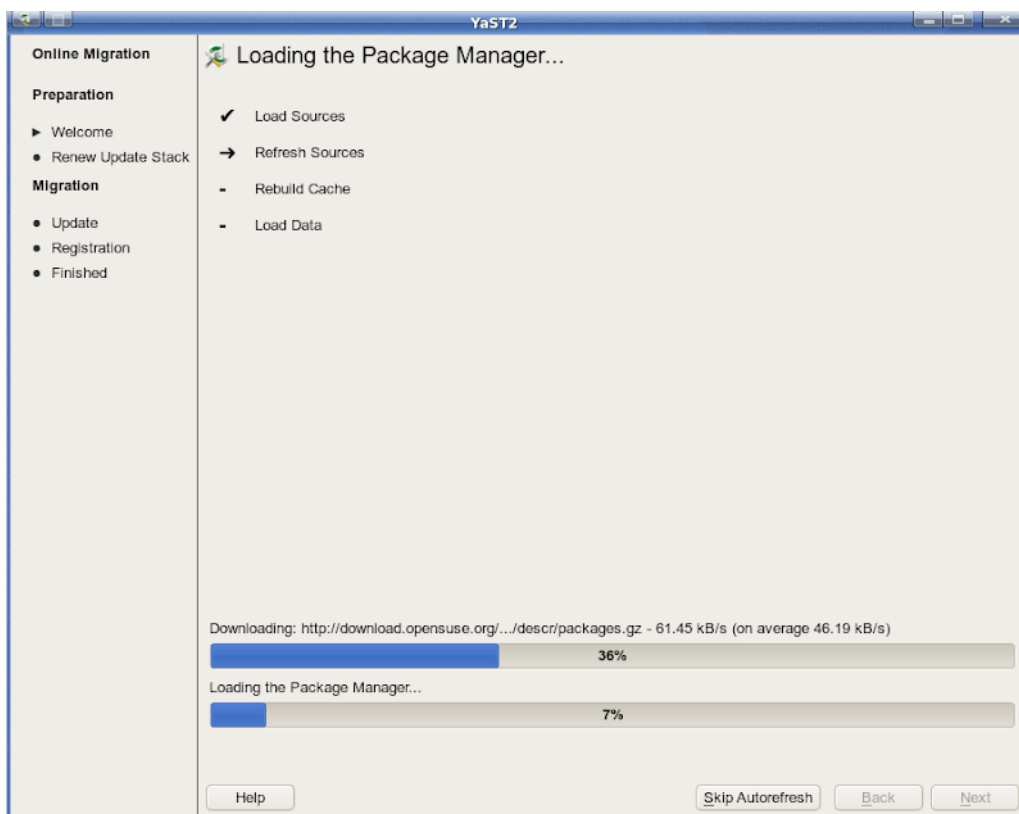
openSUSE BuildService - Mozilla - v11.1	<a href="#">v11.2</a> [11]
openSUSE BuildService - Virtualization (VirtualBox) - v11.1	<a href="#">v11.2</a> [12]
openSUSE BuildService - KDE:Community - v11.1	<a href="#">v11.2</a> [13]
openSUSE BuildService - KDE:Backports - v11.1	<a href="#">v11.2</a> [14]
openSUSE BuildService - GNOME:STABLE (v11.1)	No 11.2 equivalent. Disable.
openSUSE BuildService - GNOME:Community - v11.1	<a href="#">v11.2</a> [15]
NVIDIA repository - v11.1	<a href="#">v11.2</a> [16]
Main Repository (OSS) - v11.1	<a href="#">v11.2</a> [17]
Main Repository (NON-OSS) - v11.1	<a href="#">v11.2</a> [18]
openSUSE BuildService - KDE:Core Packages - v11.1	<a href="#">v11.2</a> [19]
openSUSE-11.1-Updates	<a href="#">v11.2</a> [20]
home:ecanuto (Gnome colors icons) - v11.1	<a href="#">Factory</a> [21]
home:cyberorg:experimental (Fusion icon) (v11.1)	No v11.2 equivalent. Disable.
Qt 4.5 - v11.1	<a href="#">v11.2</a> [22]
Qt 4.4 - v11.1	<a href="#">v11.2</a> [23]
KDE 4 Playground - 11.1	<a href="#">v11.2</a> [24]
KDE 4 Community - 11.1	<a href="#">v11.2</a> [25]
KDE 4 Core Packages - 11.1	<a href="#">v11.2</a> [26]

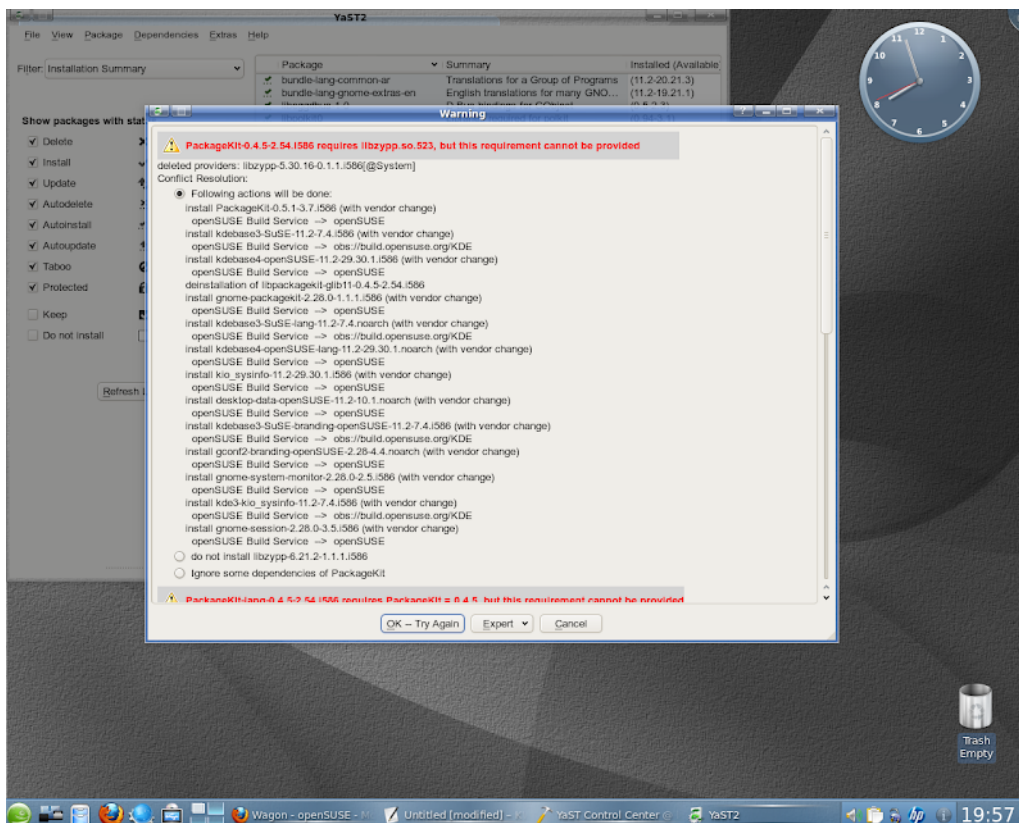


Step 3: Run "wagon." (Alt+F2 brings up the "run" dialog box in KDE. Command: "kdesu -c yast2 wagon")

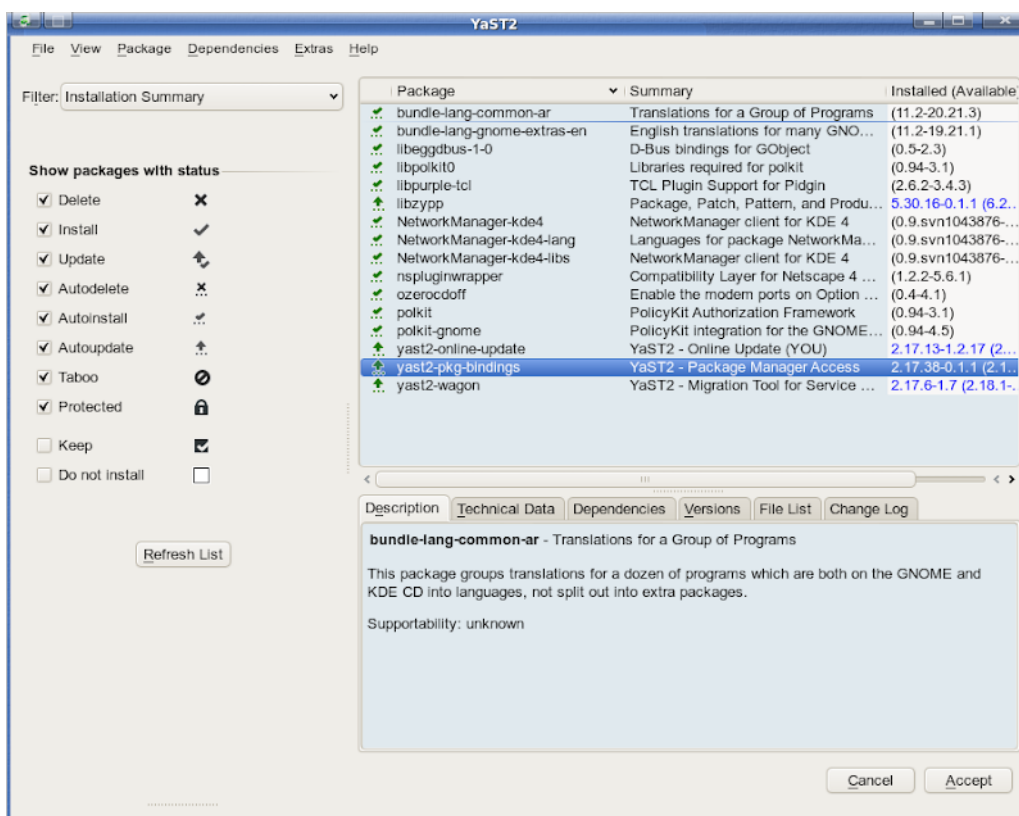


Step 4: Follow the prompts.



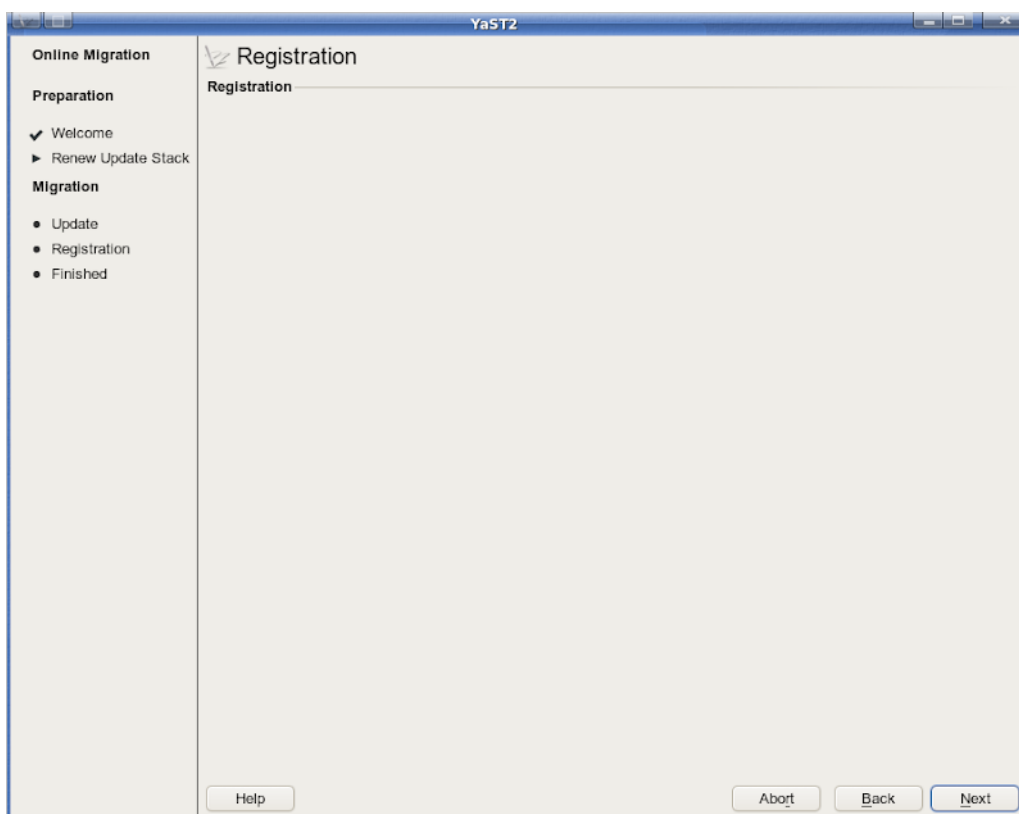
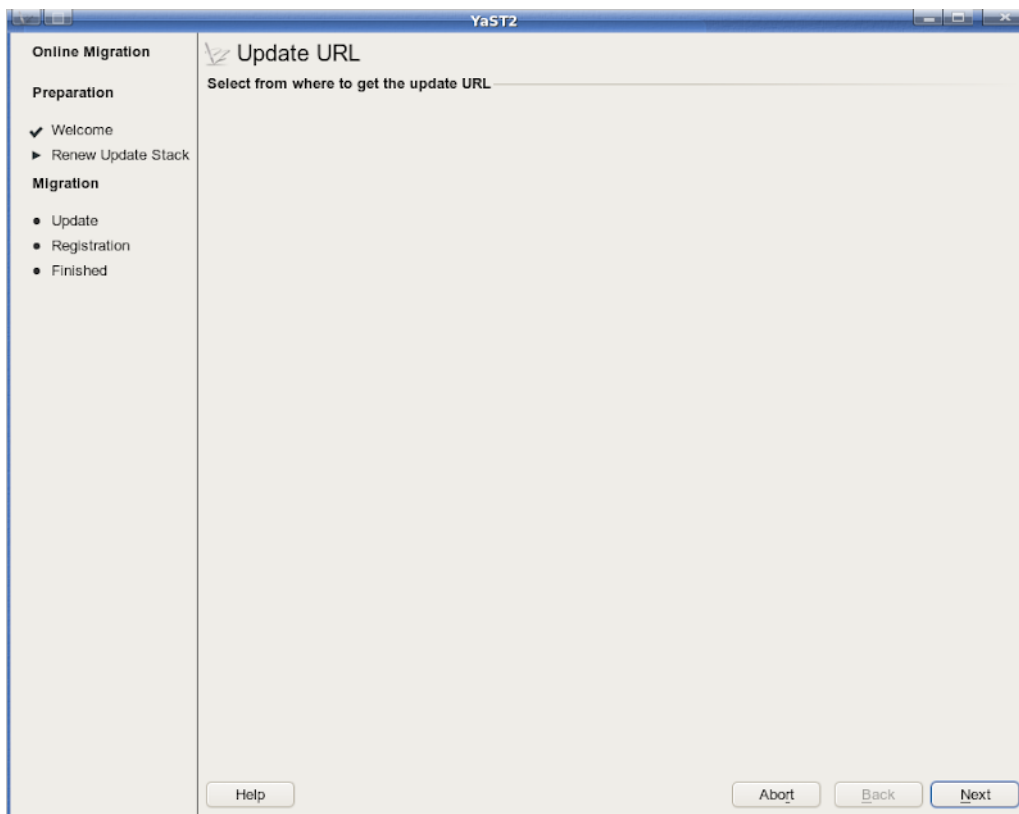


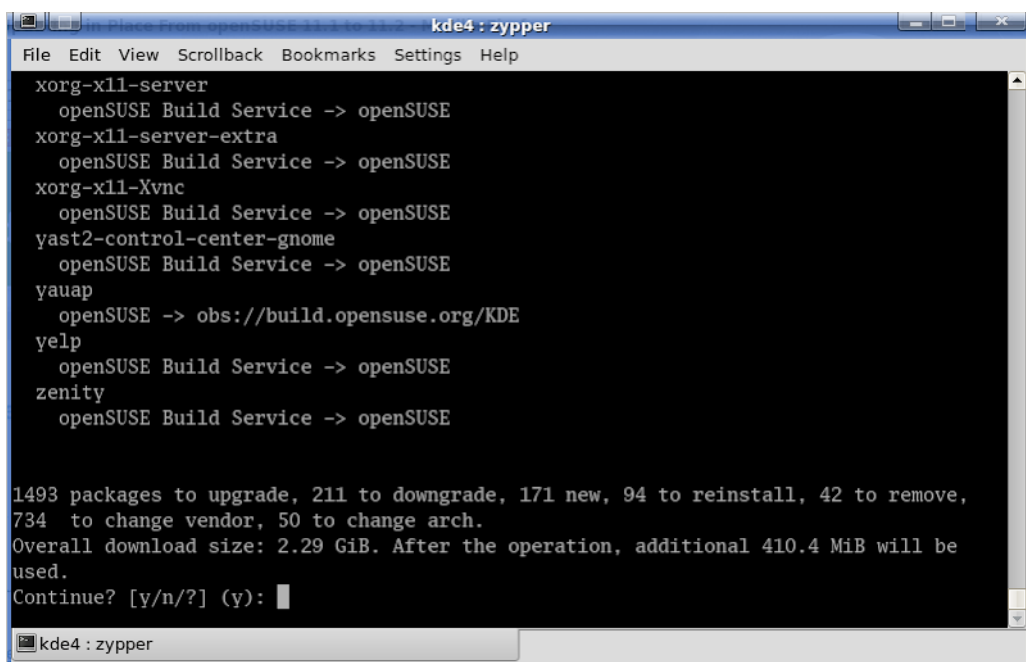
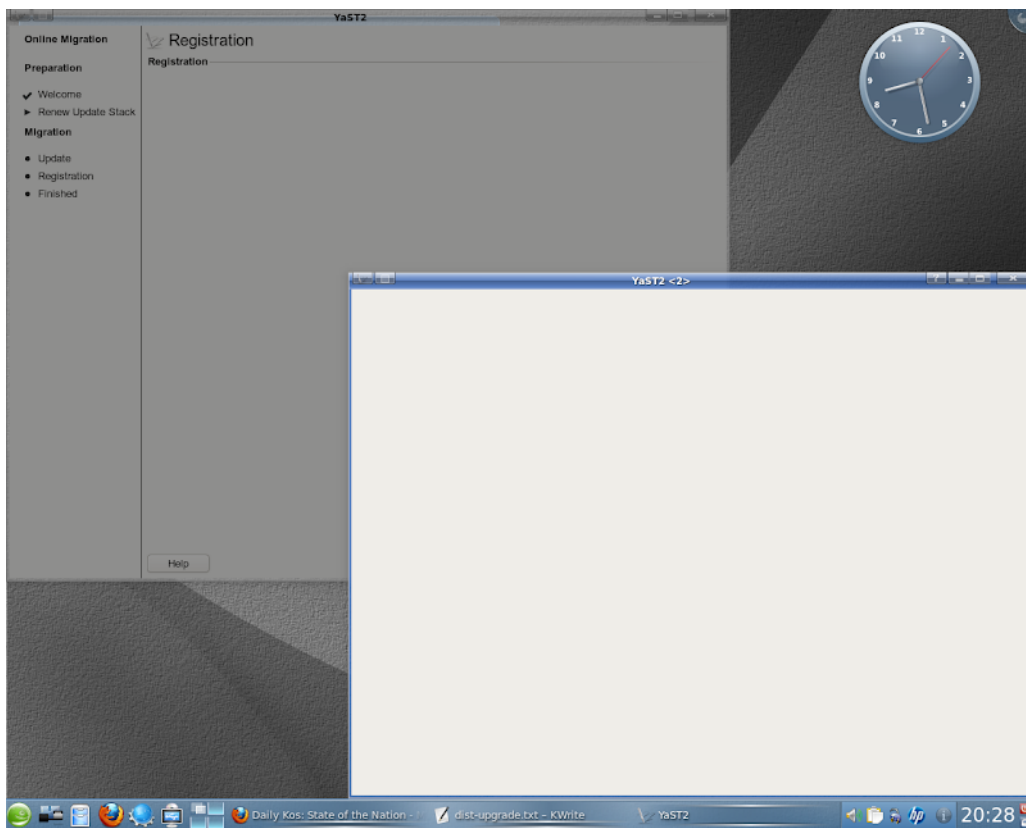
Fixing dependency errors.



Updating zypper and friends.

Step 5: At this point, the problems started: windows with nothing in them. After several full-sized blank windows came up, another one came up that I couldn't close. I finally used xkill on "wagon".





Step 6: At this point I gave up on "wagon," started up a Konsole session, and used the "zypper dup" command. After answering a few dependency solver questions and accepting the openSUSE license, it was a matter of sitting back and waiting...



```
kde4 : zypper
File Edit View Scrollback Bookmarks Settings Help
Creating fonts.{scale,dir} files .....
writing /etc/fonts/suse-font-dirs.conf
/etc/fonts/suse-hinting.conf unchanged
/etc/fonts/suse-bitmaps.conf unchanged
Creating cache files for fontconfig .....
generating java font setup
Warning: cannot find a sans serif simplified Chinese font. Simplified Chinese in Java
might not work.
Warning: cannot find a serif simplified Chinese font. Simplified Chinese in Java might
not work.
Warning: cannot find a sans serif traditional Chinese font. Traditional Chinese in Java
might not work.
Warning: cannot find a serif traditional Chinese font. Traditional Chinese in Java might
not work.
writing /usr/lib/jvm/java-1.5.0-sun-1.5.0/jre/lib/fontconfig.SuSE.properties
*** Fonts installed. ***
Running: fetchmsttf fonts-11.2-6.6.12-fetchmsttf.sh.txt (fetchmsttf, /var/adm/updatescripts) [done]
There are some running programs that use files deleted by recent upgrade. You may wish
to restart some of them. Run 'zypper ps' to list these programs.
bienvenue:/home/kde4 #
```

Step 7: I'm not sure how long the upgrade took (had to catch some zzzZZZ's) but it was over 3 hours. The only steps left to do were to run the "SuSEconfig" command and reboot.



KDE 4.3.1





GNOME 2.28



KDE 3.5.10

The only thing I had to do afterwards was to use YaST's "/etc/sysconfig Editor" to change the session manager from "kdm" to "kdm4". Apparently openSUSE 11.1 used a KDE 3-based login manager, and so I got an ugly login screen upon reboot. The only thing that's broken is [PulseAudio](#) [27], GNOME's sound server, which is now often belching static when changing the volume level or playing system sounds. Otherwise, everything seems to work OK. Good job, Novell.

**Source URL:** <http://www.tuxmachines.org/node/41147>

## **Links:**

- [1] <http://www.tuxmachines.org/taxonomy/term/123>
- [2] <http://en.opensuse.org/Upgrade/Supported>
- [3] [http://en.wikipedia.org/wiki/Advanced\\_Packaging\\_Tool#Update.2C\\_upgrade\\_and\\_dist-upgrade](http://en.wikipedia.org/wiki/Advanced_Packaging_Tool#Update.2C_upgrade_and_dist-upgrade)
- [4] [http://en.opensuse.org/Package\\_Repositories](http://en.opensuse.org/Package_Repositories)
- [5] <https://features.opensuse.org/305634>
- [6] <http://en.wikipedia.org/wiki/Yast>
- [7] [http://en.opensuse.org/Wagon#Example\\_usage:\\_Upgrading\\_from\\_11.1\\_to\\_11.2\\_via\\_Wagon](http://en.opensuse.org/Wagon#Example_usage:_Upgrading_from_11.1_to_11.2_via_Wagon)
- [8] [http://download.opensuse.org/repositories/GNOME%3a/STABLE%3a/2.28/openSUSE\\_11.2/](http://download.opensuse.org/repositories/GNOME%3a/STABLE%3a/2.28/openSUSE_11.2/)
- [9] [http://download.opensuse.org/repositories/server%3a/monitoring/openSUSE\\_11.2/](http://download.opensuse.org/repositories/server%3a/monitoring/openSUSE_11.2/)
- [10] <http://ftp.skynet.be/pub/packman/suse/11.2/>
- [11] [http://download.opensuse.org/repositories/mozilla/openSUSE\\_11.2/](http://download.opensuse.org/repositories/mozilla/openSUSE_11.2/)
- [12] [http://download.opensuse.org/repositories/Virtualization%3a/VirtualBox/openSUSE\\_11.2/](http://download.opensuse.org/repositories/Virtualization%3a/VirtualBox/openSUSE_11.2/)
- [13] [http://download.opensuse.org/repositories/KDE%3a/Community/openSUSE\\_11.2/](http://download.opensuse.org/repositories/KDE%3a/Community/openSUSE_11.2/)
- [14] [http://download.opensuse.org/repositories/KDE%3a/Backports/openSUSE\\_11.2/](http://download.opensuse.org/repositories/KDE%3a/Backports/openSUSE_11.2/)
- [15] [http://download.opensuse.org/repositories/GNOME%3a/Community/openSUSE\\_11.2/](http://download.opensuse.org/repositories/GNOME%3a/Community/openSUSE_11.2/)
- [16] <http://download.nvidia.com/opensuse/11.2>
- [17] <http://download.opensuse.org/distribution/11.2/repo/oss/>
- [18] <http://download.opensuse.org/distribution/11.2/repo/non-oss/>
- [19] [http://download.opensuse.org/repositories/KDE%3a/KDE3/openSUSE\\_11.2/](http://download.opensuse.org/repositories/KDE%3a/KDE3/openSUSE_11.2/)
- [20] <http://download.opensuse.org/update/11.2>
- [21] [http://download.opensuse.org/repositories/home%3a/ecanuto/openSUSE\\_Factory/](http://download.opensuse.org/repositories/home%3a/ecanuto/openSUSE_Factory/)
- [22] [http://download.opensuse.org/repositories/KDE%3a/Qt/openSUSE\\_11.2/](http://download.opensuse.org/repositories/KDE%3a/Qt/openSUSE_11.2/)
- [23] [http://download.opensuse.org/repositories/KDE%3a/Qt44/openSUSE\\_11.2/](http://download.opensuse.org/repositories/KDE%3a/Qt44/openSUSE_11.2/)
- [24] [http://download.opensuse.org/repositories/KDE%3a/KDE4%3a/Playground/openSUSE\\_11.2/](http://download.opensuse.org/repositories/KDE%3a/KDE4%3a/Playground/openSUSE_11.2/)
- [25] [http://download.opensuse.org/repositories/KDE%3a/KDE4%3a/Community/openSUSE\\_11.2/](http://download.opensuse.org/repositories/KDE%3a/KDE4%3a/Community/openSUSE_11.2/)
- [26] [http://download.opensuse.org/repositories/KDE%3a/KDE4%3a/STABLE%3a/Desktop/openSUSE\\_11.2/](http://download.opensuse.org/repositories/KDE%3a/KDE4%3a/STABLE%3a/Desktop/openSUSE_11.2/)
- [27] <http://en.wikipedia.org/wiki/Pulseaudio>