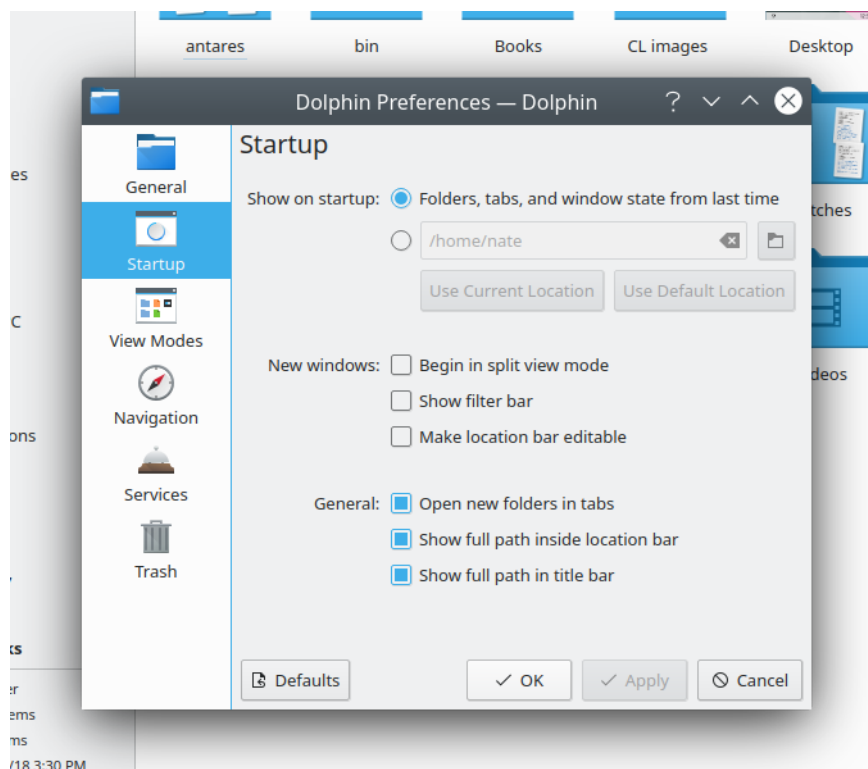


KDE: Latest Improvements and Airport Locations in KDE Itinerary

By Roy Schestowitz

Created 02/05/2020 - 3:05pm

Submitted by Roy Schestowitz on Saturday 2nd of May 2020 03:05:20 PM Filed under [KDE](#) [1]



- [This week in KDE: Features you've been waiting for](#) [2]

This week we have some big stuff for you, including a rewritten global shortcuts settings page, an option to remember Dolphin's window state across launches, a fix for longstanding kerning issues with centered text in QML-based software, and much more!

- [KDE Starts May With Dolphin Improvements, Various Bug Fixes](#) [3]

KDE developers remain as busy as ever during the global lockdown around the coronavirus.

KDE developer Nate Graham has published his usual weekly summary highlighting all of the development happenings for this open-source desktop environment. Some of the activity for ending out April and starting May on the KDE front includes:

- The Dolphin file manager by default now remembers the last open tabs, location, and settings like split-views when closing and reopening it.

- [Airport Locations in KDE Itinerary](#) [4]

In order to navigate you to and from an airport KDE Itinerary needs to know where that airport actually is. That is a seemingly easy question, but surprisingly hard to answer with the level of precision we need. Since the recent work on public transportation line metadata left me with a local OpenStreetMap database, I tried to see if we can improve our airport coordinates a bit.

[KDE](#)

Source URL: <http://www.tuxmachines.org/node/137114>

Links:

[1] <http://www.tuxmachines.org/taxonomy/term/108>

[2] <https://pointieststick.com/2020/05/02/this-week-in-kde-features-youve-been-waiting-for/>

[3] https://www.phoronix.com/scan.php?page=news_item&px=KDE-Starts-May-2020

[4] <https://www.volkerkrause.eu/2020/05/02/kde-itinerary-airport-locations.html>