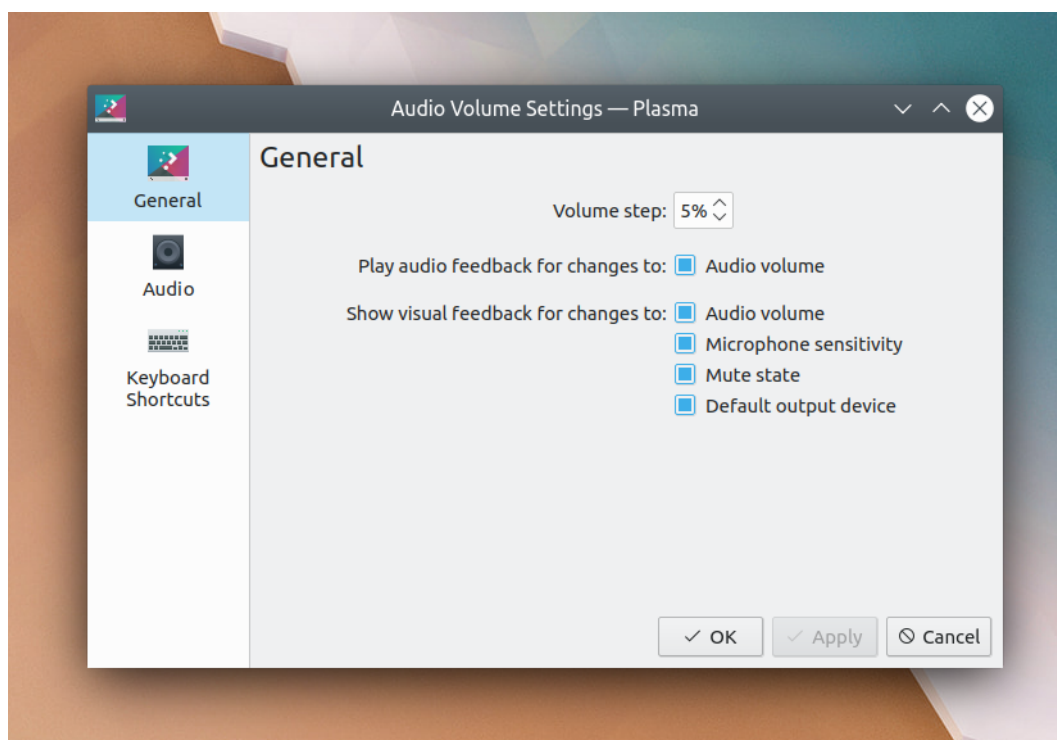


Nate Graham on Latest KDE Improvements

By *Roy Schestowitz*

Created 06/04/2020 - 1:31am

Submitted by Roy Schestowitz on Monday 6th of April 2020 01:31:21 AM Filed under [KDE](#) [1]



- [This week in KDE: Moar performance!](#) [2]

Some very nice performance fixes landed this week, which should substantially boost move and copy speeds for local transfers and transfers to and from Samba shares in particular. But that's not all, and there's more on the menu?

- [KDE Starts April With Big Performance Jump For Local I/O + 50~95% Faster Samba Transfers](#) [3]

KDE developers managed to squeeze some long-problematic I/O optimizations into the KDE code-base this week along with other enhancements to make for a nice first week of April.

The performance work for kicking off April includes:

- 50~95% faster transferring of large files to/from Samba shares. This big speed-up is a Dolphin improvement for a 2012 bug report. This fast-copy support for the Samba code should now allow "mount-level copy performance" thanks to various architectural changes in the code.

[KDE](#)

Source URL: <http://www.tuxmachines.org/node/136034>

Links:

[1] <http://www.tuxmachines.org/taxonomy/term/108>

[2] <https://pointieststick.com/2020/04/04/this-week-in-kde-moar-performance/>

[3] https://www.phoronix.com/scan.php?page=news_item&px=KDE-Better-Performance-April