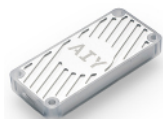


Google's Edge TPU AI chip will run on a USB stick computer

By *Rianne Schestowitz*

Created *31/07/2018 - 4:54pm*

Submitted by Rianne Schestowitz on Tuesday 31st of July 2018 04:54:44 PM Filed under [Android](#) [1] [Linux](#) [2]



Google followed up on its Edge TPU machine learning chip announcement by unveiling a USB Type-C based version that you can plug into any Linux or Android Things computer, including a Raspberry Pi. There are also new details on the Edge TPU dev board.

Following Google's announcement of an embedded friendly Edge TPU version of its Tensor Processing Unit AI chip and the related Cloud IoT Edge stack for IoT gateways, the company announced a USB stick computer version of Edge TPU that can work with any Linux or Android Things computer. It also posted more details on the upcoming, NXP-based Edge TPU development kit, including its SoC: an NXP i.MX8M.

[3]

[Android Linux](#)

Source URL: <http://www.tuxmachines.org/node/114076>

Links:

[1] <http://www.tuxmachines.org/taxonomy/term/143>

[2] <http://www.tuxmachines.org/taxonomy/term/63>

[3] <http://linuxgizmos.com/googles-edge-tpu-ai-chip-will-run-on-a-usb-stick-computer/>